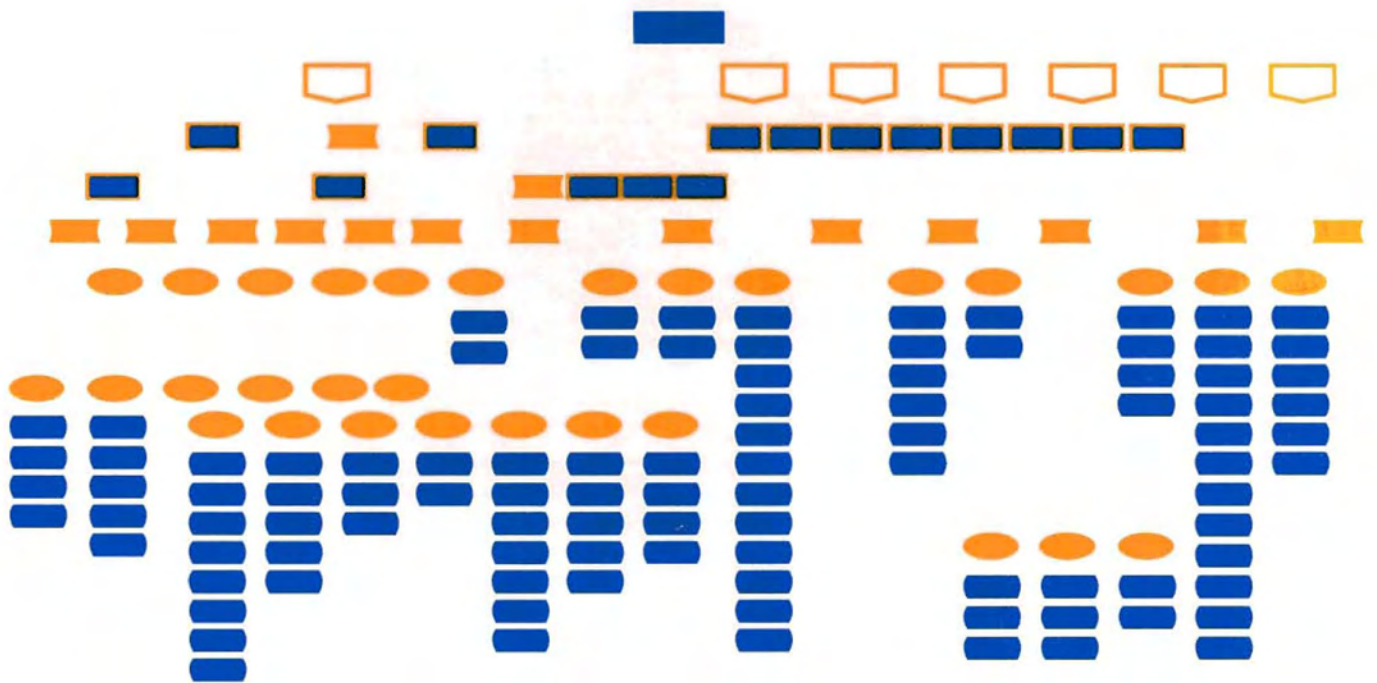
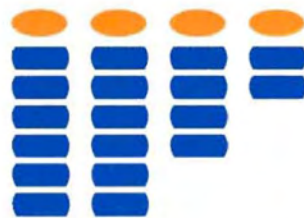


PROCEEDINGS

Topical Meeting on Risk Management— Expanding Horizons



***Boston, Massachusetts
June 7-10, 1992***



Proceedings
of the
Risk Management—
Expanding Horizons

Ronald A. Knief (Ogden EES) Editor

Sponsored by the
American Nuclear Society's Power Division

Cosponsored by:
American Nuclear Insurers
American Institute of Chemical Engineers
Electric Power Research Institute
Harvard School of Public Health
International Atomic Energy Agency
Risk and Insurance Management Society, Inc.
American Society of Mechanical Engineers
Society of Risk Analysis



Published by the
American Nuclear Society, Inc.
La Grange Park, Illinois 60525 USA

MEETING ORGANIZERS

Organizing Committee

B. John Garrick (PLG, Inc.)
Robert L. Long (GPU Nuclear, NJ)
General Chairs

Technical Program Committee

Ronald A. Knief (Ogden EES)
Chair

David Carlson (SNL)
G. William Hannaman (SAIC)
Michael Weinstein (ANI)
Deputy Chairs

Hatice Cullingford (NASA)
Sharon Hudnall (Response Manage)
Mark Paradies (System Improvements)
Mike Weinstein (ANI)
Douglas Iden (Erin Eng)
Robert Bari (BNL)
Ronald Bayer (Virginia Power)
Lisa Bendixen (Arthur D. Little)
Victoria Briant (GPU Nuclear)
Tony Bridger (Bank of Montreal)
Annick Carnino (EdF/IAEA)
Vincent Covello (Columbia Univ)
Joseph Cramer (Brown & Root/AEChE)
Dirk Dahlgren (SNL)
George Dooley (DCS Systems)
Mark Hoover (Lovelace ITRI)
Roger Humphries (AECL)
Reed Johnson (Univ of Virginia)
Felix Kloman (Tillinghast)
Joel Kramer (NRC)
Harold Kurstadt (Management Sys Lab)
Fred Mogolesko (Boston Edison)
Edward Quinn (MDM Eng)
Nathan Siu (MIT)
Ian Wall (Consult)

ISBN: 0-89448-176-2
ANS Order No. 700180
Copyright © 1993 American Nuclear Society, Inc.
555 N. Kensington Ave.
La Grange Park, IL 60525 USA

CONTENTS

RISK MANAGEMENT—EXPANDING HORIZONS

OPENING PLENARY AND TUTORIAL ON RISK MANAGEMENT

Organizer: <i>Ronald Knief (Ogden Environmental and Energy Services)</i>	
Co-Moderator: <i>Robert Long (GPU Nuclear Corporation)</i>	
Co-Moderator: <i>Jean van Dievoet (Belgonucléaire)</i>	
Risk Management—Expanding Horizons: An Introduction / <i>Ronald A. Knief (Ogden Environmental and Energy Services), Robert L. Long (GPU Nuclear Corporation)</i>	3
Facing Reality Minimizes Risk / <i>James L. Gallagher (Westinghouse Electric Corporation)</i>	6
Regulatory Risk Coherence / <i>Forrest J. Remick (U.S. Nuclear Regulatory Commission)</i>	9
Two Decades of PRA: What Next? / <i>Norman C. Rasmussen (Massachusetts Institute of Technology)</i>	14
The Role of Feedback in the Airline Industry / <i>John H. Enders (Flight Safety Foundation)</i>	15
Communication in Reducing Facility Siting Risk / <i>Ann S. Bisconti (U.S. Council for Energy Awareness)</i>	20
Rethinking Risk Management / <i>H. Felix Kloman (Tillinghast)</i>	23
Unintended Consequences of Single-Issue Risk Assessment—A Proposal for Regulatory Restructure / <i>Chauncey Starr (Electric Power Research Institute)</i>	32

BROAD-CONTEXT RISK MANAGEMENT APPROACHES

Organizer and Co-Moderator: <i>Michael Weinstein (American Nuclear Insurers)</i>	
Co-Moderator: <i>Michael Cullingford (U.S. Nuclear Regulatory Commission)</i>	
Broad-Context Risk Management Approaches / <i>Michael Weinstein (American Nuclear Insurers)</i>	37
Optimal Safety Levels via Social Indicators / <i>N. C. Lind, J. S. Nathwani (University of Waterloo, Canada)</i>	38

An Integrated Regional Approach to Risk Management of Industrial Systems / <i>S. Chakraborty (Swiss Federal Nuclear Safety Inspectorate), R. Stratton (Paul Scherrer Institute, Switzerland)</i>	42
--	----

An Organizational Early-Warning System for Safety, Health, and Environmental Crises / <i>Paul Shrivastava (Bucknell University)</i>	49
---	----

Nuclear Quality Assurance Operating Philosophy—A Quality-Oriented Approach / <i>William R. Corcoran (TENERA), James E. Geiger (Florida Power & Light Company), Richard E. Heibel (Baltimore Gas & Electric Company), John B. Cotton (Philadelphia Electric Company), Andrew R. Sabol (Pennsylvania Power & Light Company)</i>	52
---	----

Eastern European Risk Management / <i>John A. Honey (American Nuclear Insurers)</i>	55
---	----

What Kind of Problem Is an Outage? Implications for Risk Management / <i>Constance Perin (MIT Sloan School of Management)</i>	57
---	----

Risk Management Programs in the Chemical Industry from Bhopal Onward / <i>Joseph J. Cramer (Brown & Root, Houston), Harris R. Greenberg (Stone & Webster, NY)</i>	60
---	----

RISK-BASED AND MATRIX APPROACHES TO MANAGEMENT

Organizer: <i>Michael Weinstein (American Nuclear Insurers)</i>	
Co-Moderator: <i>Robert Bari (Brookhaven National Laboratory)</i>	
Co-Moderator: <i>Robert Shaw (Electric Power Research Institute)</i>	

Risk-Based and Matrix Approaches to Management / <i>Michael Weinstein (American Nuclear Insurers), Robert Bari (Brookhaven National Laboratory)</i>	65
---	----

Application of Risk-Based Methods for Inspection of Nuclear Power Plant Components / <i>Kenneth R. Balkey (ASME Center for Research and Technology Development)</i>	66
---	----

Prioritization Methods and Department of Energy Applications / <i>Kenneth G. Murphy (U.S. Department of Energy), Michael G. Stamatelatos (SCIENTECH, San Diego)</i> ..	73
--	----

An Enhanced Version of Risk-Based Issue Management / <i>J. D. E. Jeffries, S. A. Laur, K. A. Harshaw (TENERA)</i>	75
---	----

Insights from Implementation of a Risk Management Methodology / *J. A. Mahn, R. P. Germann (GPU Nuclear Corporation), R. R. Jacobs (Landy Jacobs & Associates)* 79

Nuclear Insurance Risk Assessment Using Risk-Based Methodology / *William G. Wendland (American Nuclear Insurers, West Hartford, CT)* 95

Qualitative Risk Assessment: A Conceptual Context and Three Diverse Applications / *Kenneth J. Elsea, Dorian S. Conger (Conger & Elsea)* 98

Review and Assessment of Nonpower Reactor Inspection Schedules / *William J. Puglia (Science Applications International Corporation, McLean), Jon Young (Science Application International Corporation, Bothell), Theodore Michaels (U.S. Nuclear Regulatory Commission)* 100

RISK MANAGEMENT APPLICATIONS

Organizer: *Michael Weinstein (American Nuclear Insurers)*
 Co-Moderator: *Dirk Dahlgren (Sandia National Laboratories)*
 Co-Moderator: *David Harvey (Atkins SETEC)*

Risk Management Applications / *Michael Weinstein (American Nuclear Insurers, West Hartford, CT), Dirk Dahlgren (Sandia National Laboratories, Albuquerque, NM)* 107

Risk-Based Regulation / *Herschel Specter (New York Power Authority, White Plains, NY)* 108

Management Safety Assurance / *Glen J. Briscoe (EG&G Idaho, Inc., Idaho National Engineering Laboratory, Idaho Falls, ID)* 111

The Engineer's Approach to the Management of Risk / *Harold A. Kurstedt, Jr., Larry A. Mallak (Virginia Polytechnic Institute and State University, Blacksburg, VA)* 115

Engineering Perceptions of Nuclear Insurance Risk / *Larry A. Cross (American Nuclear Insurers, West Hartford, CT)* 119

Integrated Risk Management for Business Survival / *J. A. Piatt (Pacific Northwest Laboratory, Richland, WA)* 128

Safety Analysis and Review System / *E. J. Hallinan, E. B. Donner, J. M. Low, M. L. Cowen, K. W. Stephens, W. R. Waltz, K. S. Kim (Westinghouse Savannah River Company, Aiken, SC)* 131

The Selection of Probabilistic Safety Assessment Techniques for Non-reactor Nuclear Facilities / *James Vail (Westinghouse Idaho Nuclear Company, Idaho Falls, ID)* 137

ORGANIZATION CULTURE

Organizer: *Hatice Cullingford (NASA)*
 Co-Moderator: *Don Riley (U.S. Department of Energy)*
 Co-Moderator: *G. Bruce Varnado (Ogden Environmental and Energy Services)*

Organization Culture / *Hatice S. Cullingford (NASA Johnson Space Center, Houston, TX), Donald R. Riley (U.S. Department of Energy, Denver, CO)* 143

Managing Culture Change in the Commercial Nuclear Industry and the DOE Weapons Complex / *Anthony R. Buhl (TENERA, Knoxville, TN)* 144

The Role of Organization and Culture in Risk Management / *George A. Rodney (National Aeronautics and Space Administration, Washington, DC)* 146

Framework for Assessing the Influence of Organization on Plant Safety / *Mohammad Modarres, A. Mosleh (University of Maryland, College Park, MD), John Wreathall (Science Applications International Corporation, Dublin, OH)* 147

Safety Culture in Bayesian and Legal Context or How Safe Is Safe Enough? / *Harry E. P. Krug, Jr. (U.S. Department of Energy, Washington, DC)* 150

Organizational Culture During the Accident Response Process / *D. A. Shurberg, S. B. Haber (Brookhaven National Laboratory, Upton, NY)* 152

The Addictive Organization / *Diane Fassel (Wilson-Schaef Associates, Inc., Boulder, CO)* 156

How Hype and Glory Gull / *Marion K. Pinsdorf (Fordham University, New York, NY)* 159

Controlling Risk in a Changing Environment / *R. W. Keaten, A. H. Rone (GPU Nuclear Corporation, Parsippany, NJ)* 167

RISK MANAGEMENT ACTIONS TO ENHANCE HUMAN RELIABILITY

Organizer and
 Co-Moderator: *G. William Hannaman (SAIC/San Diego)*
 Co-Moderator: *Edward Frederick (GPU Nuclear Corporation)*

Risk Management Actions to Enhance Human Reliability / *G. William Hannaman (Science Applications International Corporation, San Diego, CA)* 173

The Balance Between Professionalism, Procedures, and Operating Aids / *Armand Colas (Electricite de France, Paris, France)* 174

TQM and Risk Reduction: A Corporate Culture of Continuous Improvement / *Dennis C. Nau (Sorrento Electronics, San Diego, CA)* 176

Enhancing Professionalism at GPU Nuclear /
Richard P. Coe (GPU Nuclear Corporation,
Parsippany, NJ) 177

Human Reliability Assessments and Applications to Enhance
Availability and Reduce Risk During Less-Than-Full-Power
Operations / G. William Hannaman (Science Applications
International Corporation, San Diego, CA), Avtar Singh
(Electric Power Research Institute, Palo Alto, CA) 180

Accident Evolution and Barrier Function and Accident Evolution
Management Modeling of Nuclear Power Plant Incidents /
Ola Svenson (University of Lund, Enskede, Sweden) 184

Safety and Reliability in Industrial Organizations—The Key
Factors / Robert A. Cooke (University of Illinois at Chicago,
Chicago, IL), Henry D. Sarkis (The Reliability Group,
Miami, FL) 186

The Control of Operational Risk in Nuclear Power Plant
Operations: Some Cross-Cultural Perspectives / Alexandra
Suchard, Gene Rochlin (University of California, Berkeley,
Berkeley, CA) 190

FACTORS AFFECTING RELIABILITY OF HUMAN ACTIONS

Organizer: G. William Hannaman (SAIC/San Diego)
Co-Moderator: George Dooley (DCS Systems)
Cochair and
Moderator: Annick Carnino (International Atomic Energy
Agency)

Factors Affecting Human Reliability / G. William Hannaman
(Science Applications International Corporation,
San Diego, CA) 195

An Evolutionary Enhancement of the SLIM-MAUD
Method of Estimating Human Error Rates / J. Zamanali
(Baltimore Gas & Electric, Lusby, MD), F. R. Hubbard
(FRH, Inc., Baltimore, MD), A. Mosleh (University of
Maryland, College Park, MD) 196

Emergency Operating Procedures for Severe Core Damage
Mitigation / Shahin Seyedhosseini, Alexander Knoll,
Fredrick W. Berg (Public Service Electric & Gas
Company, Hancocks Bridge, NJ) 207

Evidence of Circadian and Extended Shift Effects on Reactor
Transient Frequency / Stephen Maloney (Devonrue,
Boston, MA) 211

Mental Models and Learning from Experience in Nuclear
Power Plants / J. S. Carroll (MIT Sloan School of
Management, Cambridge, MA) 213

INCIDENT INVESTIGATION AND FEEDBACK

Organizer: Mark Paradies (System Improvements)
Co-Moderator: Edward Frederick (GPU Nuclear Corporation)

Incident Investigation and Feedback Session—Introduction /
Mark Paradies (System Improvements, Inc., Knoxville, TN) 219

Incident Investigation and Feedback Session Summary /
Edward R. Frederick (GPU Nuclear Corporation,
Middletown, PA) 221

Integrating Incident Investigation into a Management System /
Edward E. Peterson (Chevron USA, Richmond, CA) 222

TapROOT—An Easy Yet Effective System for Incident
Investigation / Linda Unger, Mark Paradies (System
Improvements, Inc., Knoxville, TN) 228

Investigation of Events Involving Human Performance /
Richard J. Eckenrode, P. Clare Goodman, Garmon West, Jr.
(U.S. Nuclear Regulatory Commission, Washington, DC) 234

Improving Safety Through Root-Cause Analysis /
J. L. Gatlin, K. Taylor (Westinghouse Savannah River
Company, Aiken, SC) 236

RISK COMMUNICATION

Organizer: Sharon Hudnall (Response Management)
Co-Moderator: Charles Powers (Resources for Responsible
Management)
Co-Moderator: Douglas Bedell (GPU Nuclear Corporation)

Preface to Risk Communication / Sharon Hudnall
(Response Management, San Diego, CA), Douglas Bedell
(GPU Nuclear Corporation, Middletown, PA) 243

From Risk Communication to Risk Education: Plotting the Path
to Real Comprehension and Active Choice in a Risky Society /
Charles W. Powers (Resources for Responsible
Management, Boston, MA) 245

The Challenges of Communicating About Risk / Ann Fisher
(Pennsylvania State University, University Park, PA) 248

Communicating Risk to the Public—Probabilistically
Impossible? / Charles O. Gallina (Illinois Department of
Nuclear Safety, Springfield, IL) 253

Legitimacy: A New Goal in Risk Management /
Marie-Noele Sicard (Universite de Technologie de
Compiègne, Compiègne, France) 256

Public Acceptability of the Use of Gamma Rays from Spent
Nuclear Fuel as a Hazardous Waste Treatment Process /
Bruce J. Mincher, Richard P. Wells, Harry J. Reilly
(Idaho National Engineering Laboratory, EG&G Idaho, Inc.,
Idaho Falls, ID) 258

The Use of NIMBY Strategies to Shape Public Perception of Nuclear Risk / *A. D. Stevens (California State University, Sacramento, CA)* 262

Risk Management Plans: An Opportunity for Communication / *Robert R. Roberts (Science Applications International Corporation, Santa Ana, CA), Sharon A. Hudnall (Response Management, San Diego, CA)* 268

Initial Crisis Risk Communication: A Success Story / *Debra K. Traverso (Cleveland Electric Illuminating Company, Perry, OH), Steven B. Goldman (Technology and Management Planning Associates, Inc., Olney, MD)* 271

APPLICATIONS OF QUANTITATIVE RISK ASSESSMENT TO NUCLEAR REACTOR SAFETY

Organizer: *David Carlson (Sandia National Laboratories)*
Co-Moderator: *Adolph Birkhofer (Gesellschaft für Reaktorsicherheit)*

Perspectives on Quantitative Approaches to Risk Management / *David D. Carlson (Sandia National Laboratories, Albuquerque, NM), Nathan Siu (EG&G Idaho, Inc., Idaho Falls, ID)* 277

The Use of Probabilistic Safety Assessments Nuclear Safety in Europe / *Adolf Birkhofer (Gesellschaft für Reaktorsicherheit, Garching, Germany)* 278

Risk Management Guidelines / *Donald A. Dube (Northeast Utilities, Berlin, CT)* 284

Connecticut Yankee Risk Reduction Initiative / *E. A. Oswald, D. A. Dube, W. H. Becker, G. A. Flannery, S. J. Weyland (Northeast Utilities, Berlin, CT)* 286

Cost Analysis and Financial Risk Profile for Severe Reactor Accidents at Waterford-3 / *John D. Cutbush (ABZ, Inc., Chantilly, VA), William L. Carpenter, Jr., (Louisiana Power & Light Company, New Orleans, LA)* 289

Value-Impact Assessment of Safety-Related Modifications / *W. M. C. Knowles, K. S. Dinnie, C. W. Gordon (Ontario Hydro, Toronto, Ontario, Canada)* 292

Trade-Off for the Savannah River Reactors Quantified with PRA Methods / *S. V. Topp (Westinghouse Savannah River Technology Center, Aiken, SC)* 297

Development of Insights from PRAs for Non-PRA People / *Harry J. Reilly, Babette M. Meale (Idaho National Engineering Laboratory, EG&G Idaho, Inc., Idaho Falls, ID)* 299

Estimating Management Impact on Core-Melt Frequency / *Wei Ugo He, Norman C. Rasmussen (Massachusetts Institute of Technology, Cambridge, MA)* 303

QUANTITATIVE APPROACHES TO MANAGING DIVERSE RISKS

Organizer: *David Carlson (Sandia National Laboratories)*
Co-Moderator: *Nathan Siu (Massachusetts Institute of Technology)*
Co-Moderator: *Brian Wimpenny (Rolls-Royce & Associates)*

A New Approach to Managing Nuclear Criticality Risk at Nuclear Fuel Services, Inc., / *Ron Green, Rik Droke, Donald Paine (Nuclear Fuel Services, Inc., Erwin, TN)* 307

Applications of PRA in Nuclear Criticality Safety / *Thomas P. McLaughlin (Los Alamos National Laboratory, Los Alamos, NM)* 309

Risk Management in Space / *M. V. Aarset (STATCON A/S, Oslo, Norway)* 312

Application of the Master Plant Logic Diagram in Risk-Based Evaluations / *M. Modarres (University of Maryland, College Park, MD)* 318

RISK MANAGEMENT GENERAL CHAIRS' CLOSING PLENARY

Organizer and
Co-Moderator: *B. John Garrick (PLG, Inc.)*
Co-Moderator: *Annick Carnino (International Atomic Energy Agency)*

Risk Management General Chairs' Closing Plenary / *B. John Garrick (PLG, Inc., Newport Beach, CA), Annick Carnino (International Atomic Energy Agency, Vienna, Austria)* 329

Reliability Implications on Manned Spaceflight via Illustration of Shuttle Mission STS-43 / *Jim Adamson (National Aeronautics and Space Administration, Houston, TX)* 331

To Best Manage Transportation Risk—Regulate or Deregulate? / *Vernon Leslie Grose (Omega Systems Group, Arlington, VA)* 332

Risk Management Practices at Unocal / *Donald L. Hanley, Narayanan Sankaran (Unocal, Los Angeles, CA)* 334

How to Communicate Risk to Skeptics: An Environmental Perspective / *Lester B. Lave (Carnegie-Mellon University, Pittsburgh, PA)* 335

Evaluation of Risk Management Practices at Yankee Atomic* Electric Company / *S. P. Schultz (Yankee Atomic Electric Company, Bolton, MA)* 336

Risk-Based Radiation Protection Standards / *Dade W. Moeller, (Harvard School of Public Health, Boston, MA)* 340